


FISHWAY STATUS REPORT

Date: 5/10/2014
 Inspection Period: 5/4 thru 5/10/2014

All JD Fishways are inspected twice per day during fish season, March. 1 - Nov. 31
 Frequent monitoring of the PLC displays in SMF Fisheries Office as necessary.

	JOHN DAY DAM	
	JD/WC Project-Fisheries P.O. Box 823 Rufus, Oregon 97050 Phone: 541-506-7860	

John Day Dam	Inspections	Criteria	Total Number of Inspections: 14	Temperature: 52 F
	Out of Criteria	Limit		Secchi: 5.2 Ft.
NORTH FISHWAY			In regular service. Five AWS pumps available since 4/11.	
Exit differential	0	≤ 0.5'		
Exit Control weirs	0	High setting	High setting is normal for JDN	
Count station differential	0	≤ 0.3'		
Weir crest depth (DS gauge)	0	1.0' ± 0.1'		
Entrance differential	0	1.0' - 2.0'	AVG 1.5	
SOUTH FISHWAY			In regular service with all three AWS turbines.	
Exit differential	0	≤ 0.5'		
Exit Control weirs	0	MID setting	MID is normal for JDS	
Count station differential	0	≤ 0.3'		
Weir crest depth (US gauge)	0	1.0' ± 0.1'		
South entrance differential	0	1.0' - 2.0'	AVG 1.3	
Entrance weir SE1	0	depth (≥ 8')	AVG 8.6	
Collection channel velocity	0	1.5 - 4 fps	AVG 3.56	
Bay 1 differential	0	1.0' - 2.0'	AVG 1.6	
N. Entrance PH(Bay 19)differential	0	1.0' - 2.0'	AVG 1.6	
Entrance weir NE1	0	depth (≥ 8')	AVG 9.5	
Entrance weir NE2	0	depth (≥ 8')	AVG 9.5	
JUVENILE PASSAGE			JBS/SMF in regular service since 3/30.	
Forebay/bypass conduit differential	0	4.0' - 5.0'	AVG 4.6	
Submersible traveling screens	0	visual inspect	MU 11 STS failed on 5/9; it was replaced with working spare on 5/10.	
Turbine trashrack drawdown	0	<1.5', wkly	JD Structural raking of MU trashracks occurs the last week of each month.	
Vert barrier screen drawdown	0	<1.5', wkly	JD Fisheries crew performs frequent gate wells' drawdowns depending on river debris.	
Spill volume	0	30/40 %	Per the PNNL experimental block design, changing every two days.	
Spill pattern	0	per FPP		
Turbine Unit Priority	0	per FPP		
Turbine 1% Efficiency	0	per FPP		

SMOLT MONITORING FACILITY

Operation: SMF is in sampling mode since 3/31 AM. Daily 24 hrs smolt sampling by PSMFC crew since 4/1.

JD Fisheries crew started regular 24/7 swing shift schedule as required by FPP; it will continue this until the end of sampling season on 9/15.

Debris: Moderate to light; sticks, branches, wooden debris, tumbleweed

Maintenance: None.

Research:

Battelle's collection, tagging and holding of juvenile salmonids at JD SMF lab underway. Their spring activities will continue 7 days a week, through the end of May.

Fallbacks: AVG: 58 MAX: 77 MIN: 24

OTHER ISSUES:

JOHN DAY

BIRDS : see the Avian Numbers tab. We report all species and locations, but in reality only gulls in the tailrace BRZ are relevant at JD.

USDA hazing from a boat started on 4/17; one 8 hrs shift, 7 days a week will continue through the end of July. A slight increase in numbers of gulls PM after hazing stops, but almost all are flying downstream of the avian tailrace BRZ grid. Gull predation at Jcontinues to be estimated as minimal.

124 out of 125 total primary lines are intact/ in place.

Operations:

JD North Fishway is in regular service and meeting the FPP criteria.

JD South Fishway in regular service and meeting the FPP criteria.

Maintenance:

Oil leak was found at MU 2 on 5/1 and its head gates were installed immediately. Tail logs were installed on 5/5, scroll case was dewatered on 5/6 and draft tube on 5/12. See JD MU2 Oil Spill MOC for more info.

JD North AWS pumps - five out of total six are available for service since 4/11. AWS pump # 4 continues in OOS status due to its lower bearing issues.

JD Engineering & contractor continue with its repairs.

Calibration: 5/2/2014 All sensors were within the criteria of 0.3' .

Gatewell Drawdown: 5/07/2014 and 5/10/2014 No measurements above 1.0'.

Research:

JD Fisheries coordinating with research groups for the upcoming 2014 studies:

PSMFC/WDFW dam angling for the pikeminnow will occur from the JD tailrace deck same as in the last few years.

Oregon DFW pikeminnow crew will survey JD Forebay BRZ (Oregon side) with electroshocking boat in May. BRZ entry permit is pending.

U of I Testing of JD North LPS (Lamprey Passage System) preparing for their passage season's work starting in June 2014.

JD Summer Juvenile Salmonids passage survival will start in June. PNNL continues collecting and tagging of fish at JD SMF for the McNary Spring passage survival.

2014 Adult Salmonids counting started at both JD Fishways by the Normandeau crew on 1 April as required by FPP.

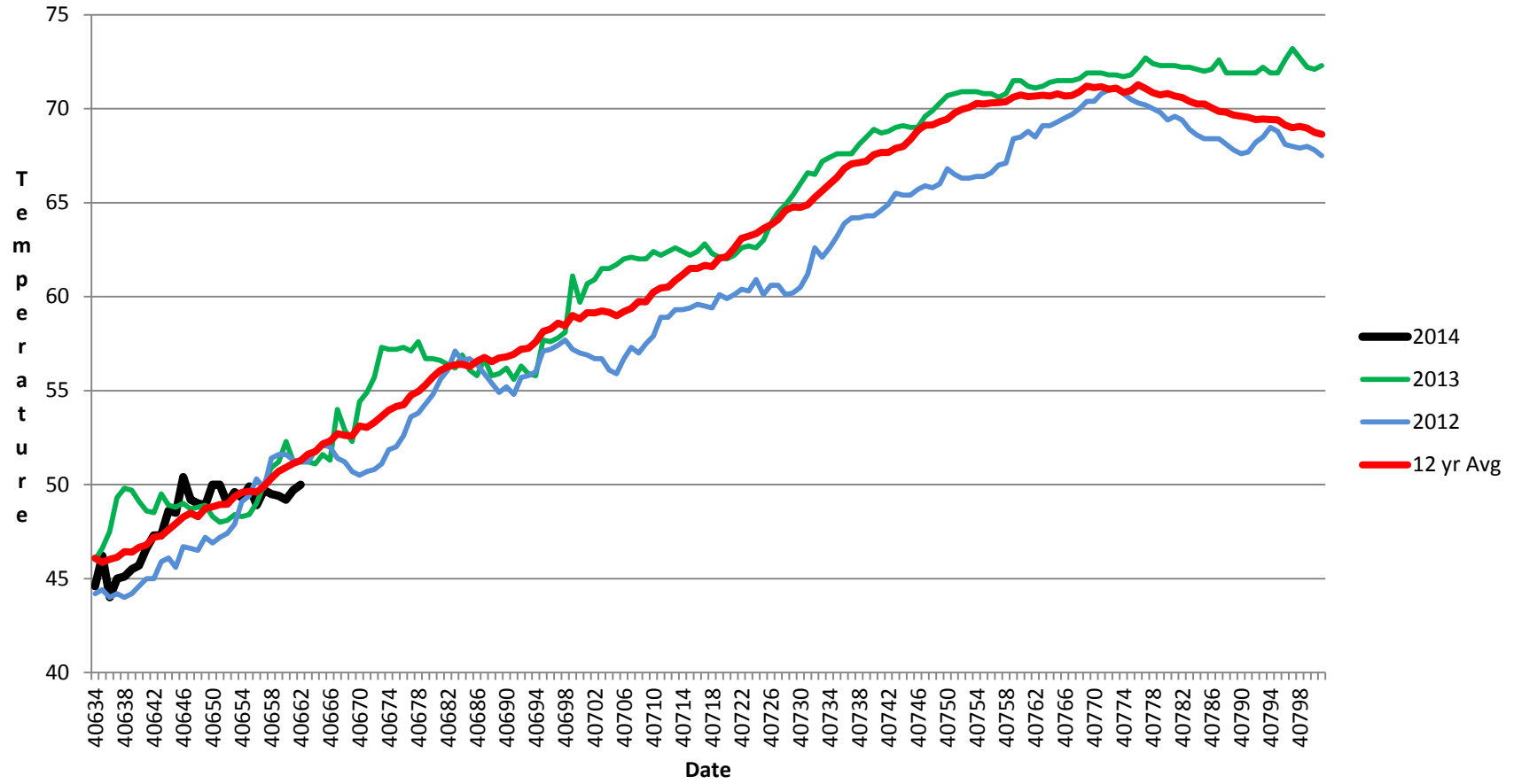
Adult Salmonids Radio telemetry evaluations are ongoing at both JD adult fishway. University of Idaho crew is in charge of detecting of all adult adult salmonids, which were tagged and released at Bonneville Dam.

Glen A. Smith PE

Date: ___ 19-May-14

OPM John Day/Willow Creek Project

JDA SMF Water Temp



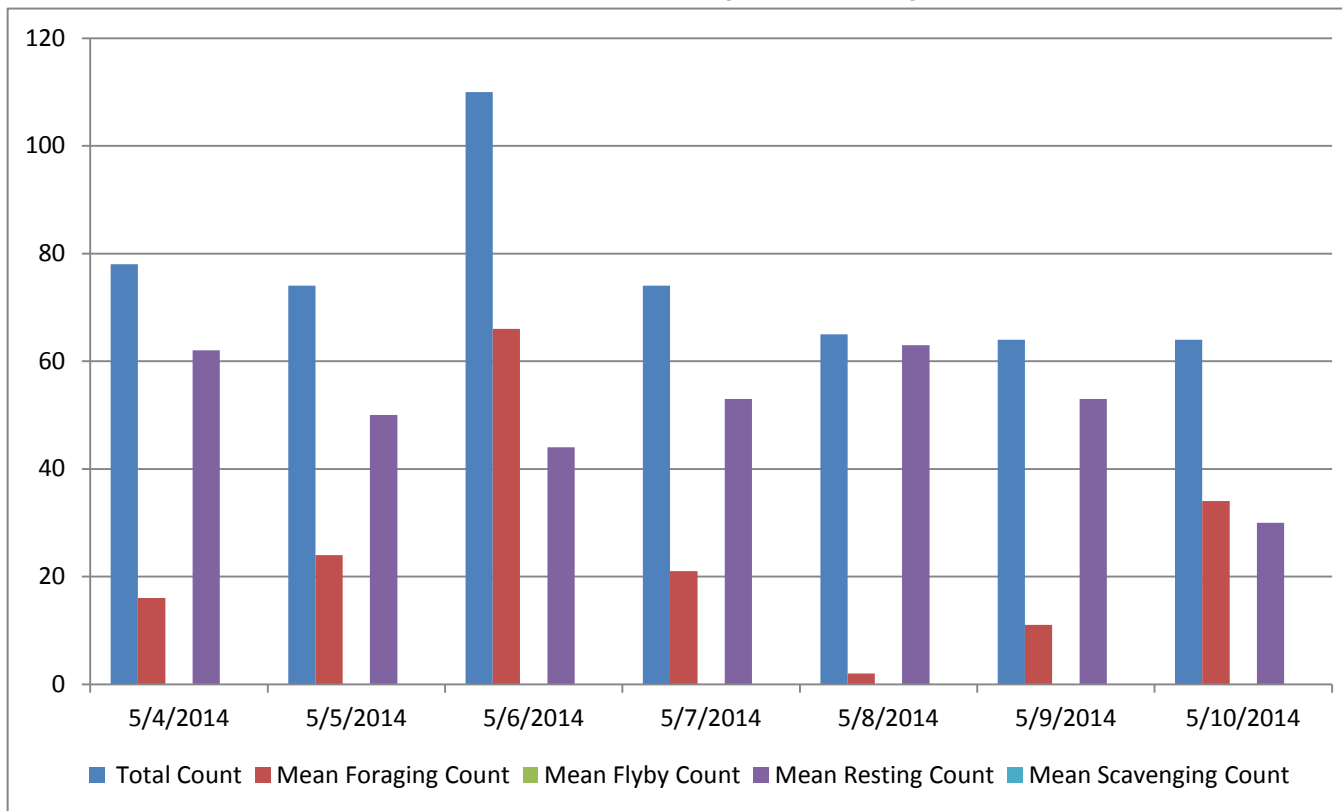
JDA COLLECTION CHANNEL VELOCITY

Date 11-May-14
By: pk

Bay(s)	Time	Sec.	Velocity (f/s)
0-2	01:04.0	64	2.81
2 - 4	0:01:55	115	3.53
4 - 6	0:02:47	167	3.46
6 - 8	0:03:38	218	3.53
8 - 10	0:04:38	278	3.00
10 - 12	0:05:36	336	3.10
12 - 14	0:06:27	387	3.53
14 - 16	0:07:19	439	3.46
16 - 18	0:07:56	476	4.86

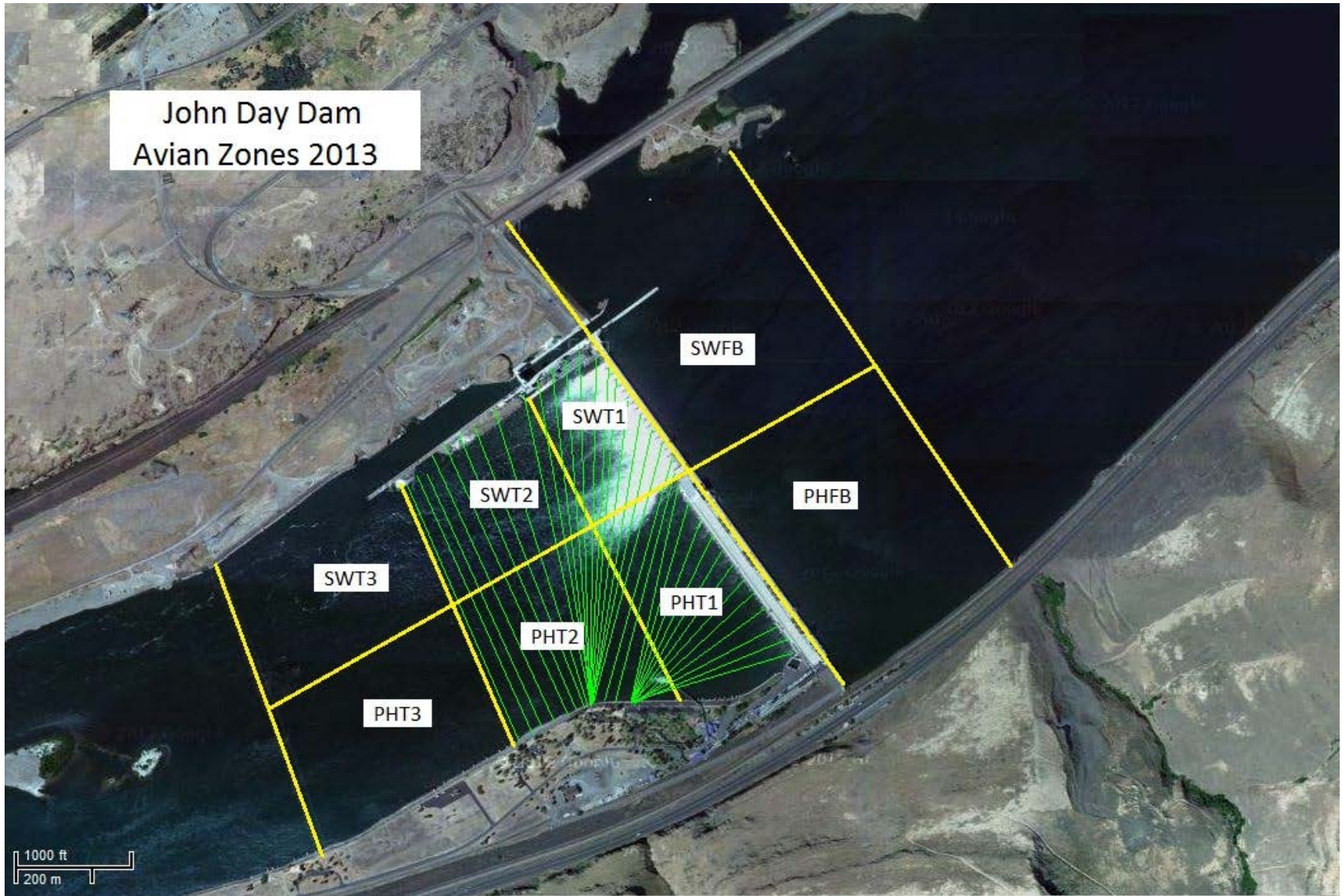
3.56

Bird Count by Activity



Date	Total Count	Mean Foraging Count	Mean Flyby Count	Mean Resting Count	Mean Scavenging Count
5/4/2014	78	16	0	62	0
5/5/2014	74	24	0	50	0
5/6/2014	110	66	0	44	0
5/7/2014	74	21	0	53	0
5/8/2014	65	2	0	63	0
5/9/2014	64	11	0	53	0
5/10/2014	64	34	0	30	0

John Day Dam
Avian Zones 2013



John Day:

	Temp:	Secchi:	Fallbacks
Sun	51	5.5	52
Mon	52	5.5	66
Tues	52	5.5	62
Wed	52	5.0	77
Thur	52	5.0	60
Fri	52	5.0	62
Sat	52	5.0	24
AVG:	52	AVG: 5.2	AVG 58
			MAX 77
			MIN 24

	NE1	NE2	S.Ent	SE1	N.Ent	JBS Diff	Bay1	Bay19
Sun	9.9	9.8	1.2	10.0	1.4	4.6	1.6	1.5
Sun	9.4	9.2	1.0	9.2	1.4	4.5	1.3	1.5
Mon	8.3	8.1	1.5	8.3	1.7	4.5	1.7	1.7
Mon	8.8	8.7	1.4	8.7	1.4	4.6	1.7	1.8
Tues	9.8	9.7	1.2	8.3	1.5	4.6	1.5	1.8
Tues	10.4	11.1	1.2	8.6	1.5	4.6	1.5	1.6
Wed	8.8	8.5	1.4	8.1	1.4	4.6	1.7	1.9
Wed	9.3	9.2	1.4	8.2	1.5	4.5	1.5	1.7
Thur	9.8	9.6	1.5	8.4	1.6	4.5	1.4	1.6
Thur	9.3	9.2	1.5	8.4	1.5	4.5	1.5	1.7
Fri	9.8	9.7	1.3	8.3	1.4	4.6	1.6	1.4
Fri	11.2	11.1	1.4	8.4	1.4	4.5	1.4	1.4
Sat	9.7	9.6	1.3	8.8	1.4	4.6	1.6	1.3
Sat	9.1	9.0	1.4	8.3	1.5	4.5	1.7	1.5
AVG:	9.5	9.5	1.3	8.6	1.5	4.6	1.6	1.6